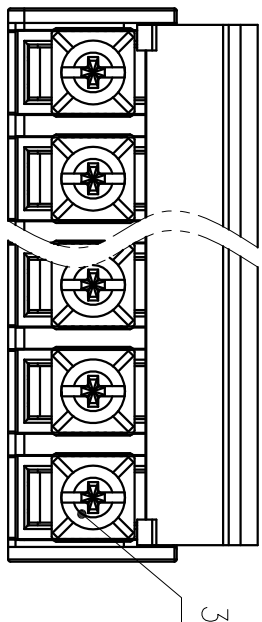


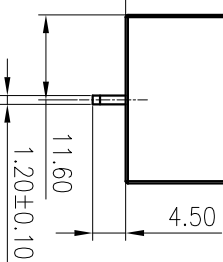
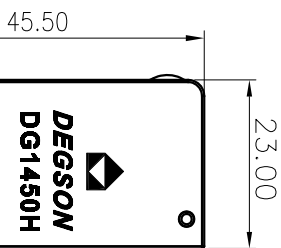
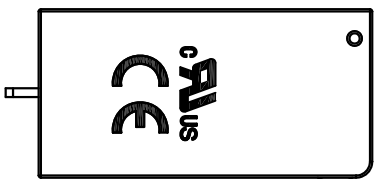
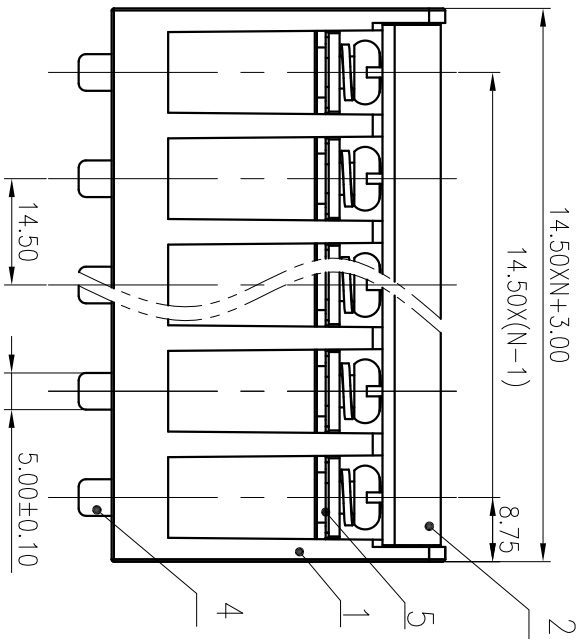
COVER OPEN VIEW



未注公差/General tolerances(mm)											0.1/10			
0	>3	>6	>10	>18	>30	>50	>80	>120	>180	>250	>315	>400	∠	
~	~	~	~	~	~	~	~	~	~	~	~	>500		
3	6	10	18	30	50	80	120	180	250	315	400	500		
±0.12	±0.18	±0.22	±0.26	±0.31	±0.37	±0.57	±0.80	±0.93	±1.05	±1.15	±1.60	±2.20		±2.50
												±2		

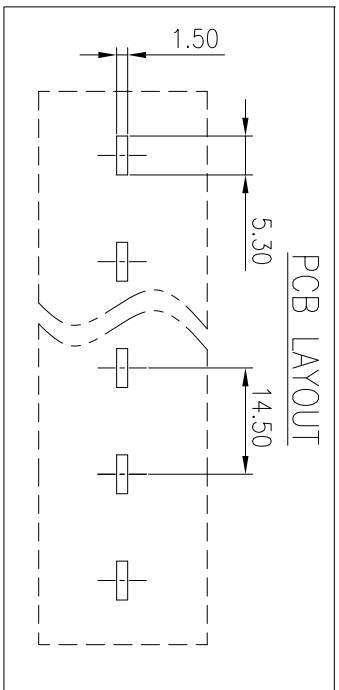
14.50XN+3.00

14.50X(N-1)



5	Nut	Steel	Zn Plated
4	Pin header	Copper alloy	Sn Plated
3	Screw	Steel	Zn Plated
2	Cover	PC	UL94V-2
1	Housing	PBT	UL94V-0

UL 标准/UL Standard:	B	C	D
额定电压/电流/Rated Voltage(V)/Current(A)	600/45	600/45	600/5
IEC 标准/IEC Standard:			
过压类别/Overvoltage Category/污染等	III/3	III/2	II/2
级/ Pollution Degree			
额定电压/电流/Rated Voltage(V)/Current(A)	800/76	1000/76	1000/76
螺丝扭矩/Torque Tightening(N·m/Lb·in)	M5: 2.0/17.54		
线径范围(硬线和软线)/Wire Range(rigid and flexible)(mm ² /AWG)	0.5~10/22~8		
间距/Pitch(mm)/线数范围/Poles	14.5/N=02~14P		
剥线长度/Stripping length(mm)	13		
使用温度范围/Operating temperature(°C)	-40~+120		
符合RoHS环保要求/Conform to RoHS	Yes		



SURFACE: /

MATERIAL: /

MAT NO.: /

STATUS: /

APPD: /

CHKD: /

DRAFT: Merry.tong 05/09/11"

SIZE: A4

0.00 (inch)

DRAWING NO.: DG1450H-B-C03

REV T0

TYPE: CUSTOMER DRAWING

SCALE: 1:1 SHEET 1/1

REV	ECN	DESCRIPTION	DRAFT	DATE

A B C D

1 2 3 4 5 6