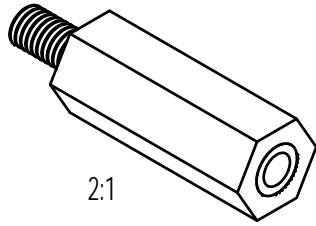
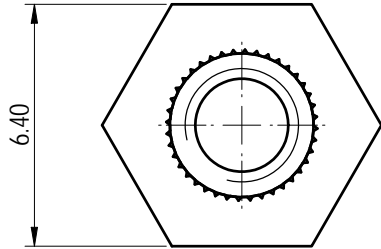


Transfer or duplication of this document as well as the utilization or communication of its contents are prohibited unless authorized in writing. All rights reserved for patent. 未经许可，禁止复制或传播本文件内容。保留所有权利，未经许可，不得复制或传播本文件内容。

please refer to the 3D model for those unmarked dimensions

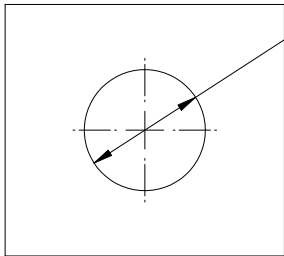


2:1



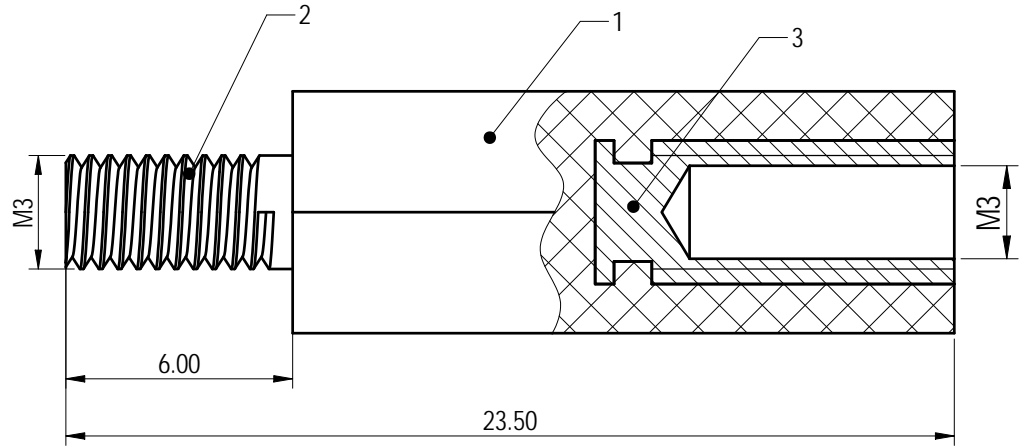
6.40

PCB LAYOUT



Ø3.20

未注公差/General tolerances (mm)												0.1/10 1/2°	
0	>3	>6	>10	>18	>30	>50	>80	>120	>180	>250	>315		>400
~3	~6	~10	~18	~30	~50	~80	~120	~180	~250	~315	~400	~500	
±0.12	±0.18	±0.22	±0.26	±0.31	±0.37	±0.57	±0.80	±0.93	±1.05	±1.15	±1.60	±2.20	±2.50



Note: The A&Z(H) in the name means: A(H) and Z(H).

ITEM	NAME OF PART	MATERIAL	NOTES
3	Nut	Steel	Ni Plated
2	Screw	Steel	Ni Plated
1	Housing	PA66+GF	UL94V-0

螺丝扭矩/Torque Tightening(N·m/Lb.in)	M3: 0.6/5.32
使用温度范围/Operating temperature(°C)	-40~+105
符合RoHS环保要求/Conform to RoHS	Yes

		MATERIAL:		SURFACE/COLOR:		
		MAT NO./REV: / 00		MAT STATUS: 批量		
APPD: 蓝贵凡	2023.01.12	NAME				
CHKD: 曹利彬	2023.01.12	DG004-01P-1Y-00A&Z(H)				
DRFT: 孙科豪	2023.01.12	DRAWING NO.	TYPE	DRAWING STATUS	SCALE	SHEET
A4		200126451	CUSTOMER DRAWING	已发布	5: 1	1/1

REV	ECN	DESCRIPTION	DRFT	DATE
00				